

THE
PASADENA
FOOTHILLS
MAGAZINE



2011
50 CREATIVE
people

URBAN SCULPTURE

City Landscapes



The public face of a city is no accident. Like a sculptor working on a masterpiece, each pillar of the community is carefully considered. Transportation, architecture, the balance between historic preservation and economic development, as well as the city's cultural offerings, including public art are all taken into account by leaders who think creatively, surround themselves with a diverse and talented team, and plan for the future with its residents in mind.



Charles L. Harrington
Chairman and Chief Executive Officer - Parsons Corporation

Charles L. Harrington is the Chairman and CEO of Parsons Corporation, an international engineering, construction, technical, and management services firm headquartered in Pasadena. Mr. Harrington joined Parsons in 1982, working on diverse programs in locations ranging from Saudi Arabia to the North Slope of Alaska and in markets ranging from oil and gas to nuclear fuel reprocessing. In the 1990s, he was responsible for sales to federal government organizations and later managed a multibillion-dollar engineering and construction project with the DOE. Prior to being named Executive Vice President, Chief Financial Officer, and Treasurer in 2006, he was the founding President of Parsons Commercial Technology Group, one of Parsons' four global business units.



The World Trade Center Port Authority Trans-Hudson Transportation Hub was designed by world-famous and celebrated Spanish architect Santiago Calatrava.



Edgar Arceneaux

Los Angeles-based artist Edgar Arceneaux has been the Director of the Watts House Project since 1999. The Watts House Project is an artist driven neighborhood redevelopment project centered around the historic Watts Towers. Edgar cares about the relationship between the art and the social space and has committed his professional life to its exploration. Arceneaux has had solo exhibitions at the Hammer Museum, Los Angeles, the Kitchen, NY, the San Francisco Museum of Modern Art, Susanne Vielmetter Los Angeles Projects and The Studio Museum of Harlem, New York. In 2011 Arceneaux will have solo shows at the Museum für Gegenwartskunst, Basel, Switzerland. www.vielmetter.com & wattshouseproject.org



The Watts House Project, an artist driven neighborhood redevelopment project centered around the historic Watts Towers.

VISIONARIES

Intersection of Art & Science



There is more to Pasadena than the Rose Parade. In addition to New Year's Day, there are 364 other days in the year, and on all of them astounding things are happening right here in our back yard! The Pasadena Foothills Region is a melting pot of cultures and a melting pot of scientists and artists. Their distinct methods and even their subjects of interest cross-pollinate and allow innovative thinking to take place that doesn't happen anywhere else in the world, thanks to the dozens of world-class art and science institutions that grace our urban culture.



Brian Brophy
Director of Theater Arts
at Caltech

Brian Brophy has performed in over thirty feature films including *Shawshank Redemption*, *A Day Without a Mexican*, *Cradle Will Rock*, and on *Star Trek: The Next Generation*. His stage credits are many with a twenty-year career in LA based theater company The Actors Gang. He has directed over twenty plays and is a Fulbright scholar/lecturer in India with emphasis on Peacemaking Through Theater. Past fellowships include California Arts Council, City of Los Angeles, Soros Foundation, and is a recipient of a national model for Service Learning by the National Youth Leadership Council. In his third year at Caltech, he is currently bringing Vaclav Havel's *The Memorandum*, a farce about bureaucracy and language to the Caltech stage. Brian considers it an honor to facilitate the process of performance, and to witness how easily actor-scientists slip into comedy or tragedy.



Monsoon season in Delhi with Street Theater actors



Dan Goods
Creative Problem Solver

Dan Goods is passionate about creating moments in peoples lives where they can interact with something beautiful, meaningful, and/or possibly profound. His work is in public spaces, art museums, and outer space.

During the day he is the "Visual Strategist" at NASA's Jet Propulsion Laboratory where he transforms the complex concepts of NASA into meaningful stories that can be universally understood. In the evening he works on other creative problem solving projects around the world. He is currently collaborating on a dynamic "digital mirror" for BMW in Paris, a large data driven sculpture at the Atlanta airport, and new ways to celebrate exceptional teachers in the LAUSD.



Dan Good's eCloud at the North Concourse of the San Jose Airport. The eCLOUD is a dynamic sculpture inspired by the volume and behavior of an idealized cloud.



Erik Dreyer
Director of Science, Tech.,
Eng., & Math, Pasadena
Educational Foundation

Erik Dreyer believes education can be an amazing process of discovery about the world and self. Not satisfied with high school, he dropped out and began a journey that led him to graduate from Caltech and answer his calling. With his sights set squarely on building the future of K-12 education in Science, Technology, Engineering and Math, Erik is assembling a team and seeking partners. Hired in 2010 to grow the Robotics program of the Pasadena Unified School District, Erik has helped bring Robotics classes to every middle school in the district. Supported by the Pasadena Educational Foundation, the classes engage students in engineering, computer programming and mathematics through hands-on applications and problem solving.



PEF has partnered with the PUSD to create a Robotics education program. Students learn how to build and program Robotic systems that incorporate sensors and motors.



Stephen Nowlin
Director of Williamson Gallery,
Art Center College of Design

Over the past two decades, Stephen Nowlin has initiated multiple curatorial projects that explore the intersection of art and science. His most recent endeavor, *WORLDS*, superimposes art and astronomy at Art Center's Williamson Gallery through January 15, 2012. Earlier projects include *Things That Float*, an online exhibit for NASAimages.org; *ENERGY*, a composite of art, science, history, poetry, and natural forces; *OBSERVE*, a collaboration between invited artists and scientists of the NASA/JPL Spitzer Space Telescope; *In The Dermisphere*, a look at the art and natural history of skin; *EAR(th)*, a sound installation with artist Steve Roden utilizing satellite geophysics data; and *NEURO*, an art and science collaboration with the Center for Neuromorphic Systems Engineering, Caltech. More: williamsongallery.net.



Detail from WORLDS exhibition: Nicholas Kahn and Richard Selesnick, Liffoff, from the Apollo Prophecies, 2002-06. Courtesy of the Artists.



Steve Hindle
Director of Research,
The Huntington Library

Steve Hindle, distinguished professor of history and former head of the history department at the University of Warwick, England, is now the W. M. Keck Foundation Director of Research at The Huntington Library. Hindle has focused on England from about 1500 to 1750 and their social, cultural, and economic dynamics. He received his doctorate in history from the University of Cambridge. Hindle also serves as managing editor of *The Economic History Review*. In blending a research program with strong holdings in British history, early American history, California and the West, literature, and the history of science, The Huntington has emerged as a key research center in the United States for humanistic study.



The Huntington Library's Munger Research Center.



La Monte Westmoreland

La Monte Westmoreland has been an active presence in the Los Angeles art scene for the past thirty years. Since his inclusion in the 1972 exhibition, A Panorama of Black Artists at the Los Angeles County Museum of Art, he has been on the scene ever since, not only as an artist, but also as a respected teacher, curator and collector. Westmoreland works primarily in collage and assemblage and has produced several notable series: Watermelon Series, Shadow Series and Target Series. In the Watermelon Series, he cleverly incorporates watermelons into the hands of familiar iconic settings. In the Shadow Series, he incorporates images of well-known artists such as Jasper Johns and Robert Rauschenberg with those of lesser known African American artists such as Norman Lewis, Romare Bearden, Charles White, and Richard Wyatt.



Close up of "Shadow Series" Jasper Johns with Jacob Lawrence. Media: Assemblage. Size: 30"x20"x5"



Michael Chukes
Sculptor

Michael Chukes is a self-taught artist, who has been working professionally for over twenty-five years. Most of Chukes' works are ceramic, however, he is not a ceramicist. He is a sculptor who works mainly in clay and bronze. His artistic creations focus on the exaggerated expressions of the human form. He concentrates on capturing emotional sensations of the body rather than its physical presence. His art is deeply influenced by music; the rhythms and sounds allow him to think in different dimensions. By combining artistic visions with music, he creates what he hears. Chukes' art has been exhibited in museums and galleries worldwide. He has participated in numerous solo and group shows, and has lectured and facilitated artists' workshops across the country. www.chukesart.com

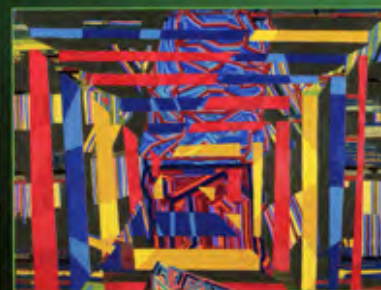


Elegance



Steve Roden
Artist

Steve Roden is a visual and sound artist living in Pasadena. His work includes painting, sculpture, drawing, film/video, installation, performance and sound. He has an MFA from Art Center College of Design, and a BFA from Otis Art Institute. Since the mid-1980's Roden has exhibited visual and sound works in museums, galleries and arts spaces worldwide. In 2010, Pasadena's Armory Center for the Arts mounted a 20 year survey of his work, curated by Howard Fox. Current projects include a research grant through the DAAD in Berlin, and a site specific sound installation for Hong Kong University's School of New Media. Roden's work can be seen regularly at Susanne Vielmetter LA Projects, and CRG Gallery in New York. He is a board member of the Pasadena Arts Council.



"aggregate (threshold)" 2010, oil and acrylic on linen. 72" x 72" courtesy of Susanne Vielmetter LA Projects, photo by Robert Wedemeyer.

DESIGN: FUNCTIONALITY & LIFE

38

THE Pasadena Footbills Magazine



ART CENTER COLLEGE OF DESIGN

Mission: "Learn to create. Influence Change." This is the mission of Art Center College of Design, and for more than 80 years the College has achieved an international reputation for preparing artists and designers to make a positive impact both in their chosen careers and the world at large.



Lorne M. Buchman, President
Art Center College of Design



Major Accomplishments: Renowned for its professional rigor, ties to industry and social impact initiatives, Art Center is the only design school designated by the United Nations as a Non Governmental Organization, enabling Art Center students to partner with communities and organizations around the world to improve lives through art and design. Recognizing the College's competitive edge, *BusinessWeek* regularly features Art Center among the world's top design schools, and both *DesignIntelligence* and *U.S. News & World Report* consistently rank Art Center's industrial design programs as #1.

Perspective: While the College is acknowledged as a global leader in art and design education, it also serves the local community, with innovative, hands-on Public Programs in art, design and creative thinking for kids as young as nine, high school students and adults interested in personal and professional development.

The Future: Art Center recently launched a five-year strategic plan called *Create Change*. The plan represents the collective wisdom and underlying consensus of Art Center students, faculty, staff, trustees, alumni, educational partners and advocates for art and design. With input from the larger Art Center community, the plan at once honors the College's distinguished history and re-imagines its future. The plan outlines three pillars to further develop areas in which the College excels and to deepen and intensify the meaningful practice of art and design.

The Conservatory Spirit: A term typically reserved for training in the performing arts, but wholly applicable to Art Center, "conservatory" means the offering of a dedicated place for talented students to undergo intense and practical career preparation as guided by an expert and professional faculty.

Convening Diverse Communities & Disciplines: Diversity of human enterprise, experience and identity are essential elements of great learning. Convening new dialogues is central to the curriculum to provide students with a contextual understanding of their enterprise. The plan also calls for policies, practices and pedagogical development to identify and educate deserving students regardless of their socioeconomic background.

New Spaces for Learning: Art Center strives to provide the most advanced learning environment possible through innovative, flexible and effective development of both physical and virtual spaces. The plan calls for the design of new facilities and the application of sustainable practices that will support an expansion of the College with leading-edge technologies and new modes of practice.

DESIGN

Functionality & Life



Geoff Wardle
Director, Advanced Mobility
Research, Art Center College
of Design

Geoff Wardle lectures and leads investigations into all kinds of transportation, geared toward balancing the needs and expectations of transportation consumers with valid business and technology parameters through systems thinking and awareness. Together with Transportation Design Department Chair Stewart Reed, Wardle is developing a new Graduate Transportation Design program at the College, which will launch in Fall 2012. The program will offer a choice of two tracks—Vehicle Design and Transportation Systems—wherein students will help change the thinking of the automotive industry and the wider field of transportation and personal mobility. Geoff has spent nearly 30 years as a professional designer and a design educator.



Dan Gottlieb & Penny Herscovitch
Faculty, Environmental Design
Art Center College of Design

Dan Gottlieb and Penny Herscovitch are Los Angeles-based designers and design-educators. Together they lead the design studio, Padlab, and co-teach in the Environmental Design Department at Art Center College of Design. Padlab's work encompasses materials research & innovation, illumination and spatial installation design. The pair has lectured and taught internationally, and their work has been published extensively. Penny conducts research and writes for renowned institutions and firms, including Morphosis Architects. They have co-lead international collaborations including the ongoing Safe Agua project, initiated in 2009 between Art Center's Designmatters and the Innovation Center of N.G.O. Un Techo Para Chile. In 2003, Dan received his Master of Architecture and Penny her B.A. in Architecture, both from Yale.

Everywhere we look are objects that have been designed; your car, your champagne glass, and your clothes. College curriculums, business strategies and new technologies are also designed with something very specific in mind: functionality and your life. Designers must have an instinct for understanding human behaviors and habits, some of which transcend countries and cultures – others do not.



The "Forward Motion: Advancing Mobility in California & Québec" Convergence of Circumstances at Art Center College of Design.



SAFE AGUA exhibit at the Inter-American Development Bank in Washington, DC, June 2011



Jazmin Whitley
Fashion Designer

At 17 Jazmin Whitley had her first fashion show at San Marino High School, and in March of 2006 she launched her clothing line, Li Cari, in her first LA fashion week. Whitley was the youngest designer to ever show, and in 2007 she made fashion history again during NY fashion week as the youngest fashion designer to ever show. As the fashion world continues to speed up and hasten through trends, Li Cari lingers on timeless and classic looks that are eternally appealing, with a modern touch influenced by her youthful and innovative personality. The allure of the Li Cari fashion is in its youthful charm and clever twists on otherwise uniform trends. Jazmin has been featured on the cover of Santa Monica Sun, US Weekly, Seventeen, and Teen Vogue, among others. Her garments are proudly Made in America. www.shoplicari.com



Photo credit: Joey Costa
Long gray dress that ties in front, 100% silk



Karen Hofmann
Product Design Department
Chair, Art Center College

Karen Hofmann has been heralded as one of the Most Admired Educators by Design-Intelligence. She also serves as the Director of the College's Color, Materials and Trends Exploration Laboratory, working to create a unique educational program around color, materials and trend forecasting. She has been instrumental in developing the department's strategy and curriculum, integrating new design research processes, forming an industrial design foundation program, promoting sustainable design courses and launching innovative educational models, including "DesignStorms," 1-3-day immersive projects in which students, faculty and professionals from participating sponsoring companies collaborate and innovate around a material technology or future market opportunity.



Photo credit: Steven A. Heller
The materials library in Art Center's Color, Materials and Trends Exploration Laboratory provides students with the resources to become better problem solvers, innovators, storytellers and leaders.



Mariana Amatullo
Vice President, Designmatters
Art Center College of Design

Mariana has lead Art Center's social impact department, DesignMatters, since its founding in 2001. The program teaches artists and designers to address critical societal issues affecting the wellbeing and prosperity of our communities through collaborations, educational projects, exhibitions, and publications. Art Center is the first design institution to hold NGO status with the United Nations, and has emerged in the past ten years as one of the most critical contributors of an engaged mode of art and design education committed to innovation and social change. She is a Non-Profit Fellow at the Weatherhead School of Management, Case Western Reserve University; she holds an MA in Art History and Museum Studies from the University of Southern California and a License en Lettres from the Sorbonne University, Paris.



Research Methodology Cards created by Environmental and Product Design faculty for the Safe Agua Chile project



Donte Whitehead
12th Grade, Learning Works
Charter School

Donte cannot remember when he began drawing, it seems like he always has. He loves all forms of art, whether creating it or observing it, although his particular talents landed him a career in tattoo artistry at an early age and his art is displayed by, and on, hundreds of clients. He is drawn to tattoos as a way to give others art that will last their lifetime. After expulsions from every school he attended and repeated prison stays, Donte found himself at Learning Works Charter School as a last chance for graduating high school. His dream is to own a tattoo shop, and in the meantime Art WORKS provides the opportunity for Donte to explore other forms of artistic expression, including clay sculpture, painting, and music. He proudly displays a forearm tattoo that reads "Jack of All Trades."



Donte's art is displayed by, and on, hundreds of clients.



Holly Wren Hofgaarden
Graphic Design Student,
Art Center College of Design

Holly Wren Hofgaarden was born at Huntington Memorial in 1985, grew up in La Canada Flintridge and currently lives in Old Town Pasadena. She has always had a passion for the Arts. At first, Holly kept "art" as a hobby and chose to pursue a career in the music industry. After achieving a business degree at University of the Pacific, she spent two years working in music management. Eventually, Holly realized this wasn't what she envisioned for her life and decided to pursue a degree in graphic design. She immediately discovered this was her true passion and is currently in her second term at Art Center College of Design. Holly continues to follow her dreams and enjoys being in a creative environment.



Eco Pets packaging design by Holly Wren Hofgaarden



Vanessa Aguilar
12th Grade, Learning Works
Charter School

Vanessa works primarily in pencil and ink drawings, although she is always looking to increase her skill in other mediums—she takes "street art" and print making classes at Art WORKS, and others when there is time. She draws when she cannot express herself with words, often portraying through her work the emotion of alienation. To show this, her human figures do not look "regular" as she describes it. Instead they are often lanky or boney, with surreal features to show how "almost normal" can still seem so out of place—a feeling she believes most people can identify with. She hopes to attend art school and someday have a featured exhibit. She wants to pursue art because she does not want an ordinary job or life; she wants to be irreplaceable, and as she says, every work of every artist is unique.



Eternal Mother